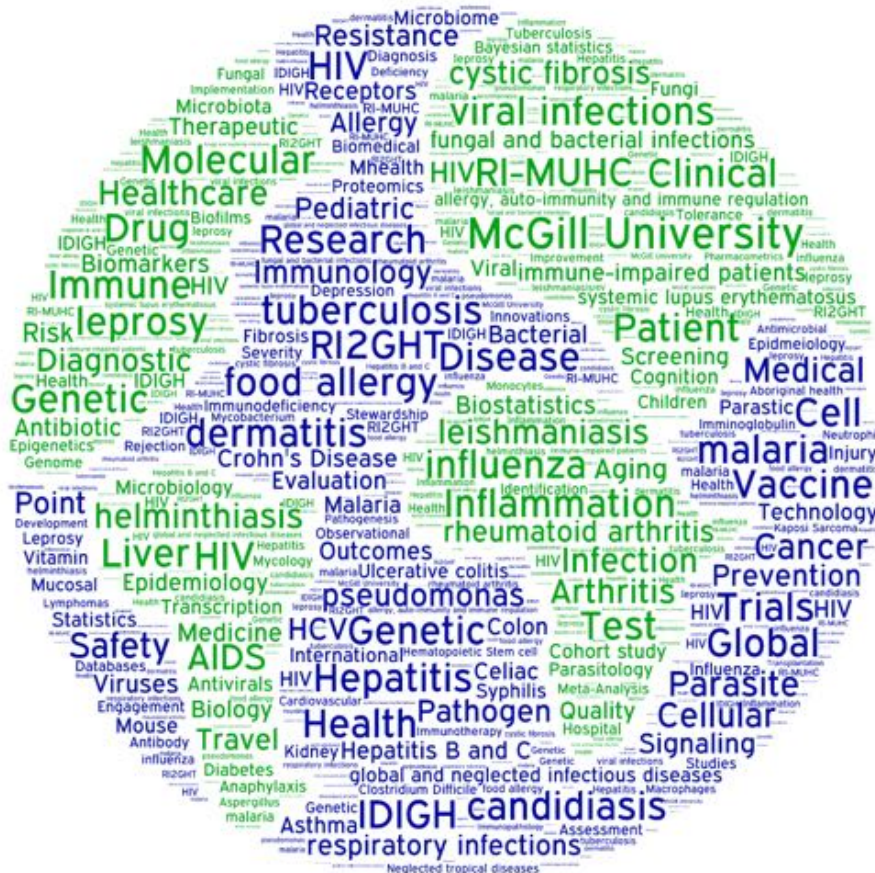




Infectious Diseases and Immunity in Global Health Program
Programme en maladies infectieuses et immunité en santé mondiale

IDIGH RESEARCH DAY



@IDIGHProgram

Friday, April 22, 2016

WELCOME FROM DR. VASSILIOS PAPADOPOULOS

Executive Director and Chief Scientific Officer, Research Institute of the McGill University Health Centre (RI-MUHC)

Dear colleagues,

Welcome to the 2016 Research Day of the Infectious Diseases and Immunity in Global Health (IDIGH) Program. IDIGH's goals are to catalyze innovative research, establish discovery pipelines, and to train the next generation of scientists in the areas of infectious diseases, immunology and global health. The program's interests range from respiratory, viral, fungal and bacterial infections to allergy, auto-immunity and immune regulation, as well as global and neglected infectious diseases.



The resurgence of pandemics and overlooked tropical diseases, together with the positioning of immunotherapy at the forefront of novel treatments for various diseases, highlight the importance of the work from IDIGH members. More than ever, their research stands at the leading edge of research discovery, treatment and outcome evaluation. This Research Day gives the opportunity to colleagues and visitors to discover the exciting new findings from IDIGH members, students and staff.

I wish you all a productive day that will educate, enhance discovery and facilitate the development of collaborations to advance the research of the members of IDIGH.

Thank you for attending.

Vassilios Papadopoulos
Executive Director
RI MUHC

WELCOME FROM DR. ERWIN SCHURR

Director, IDIGH Program



Dear IDIGH Research Day Attendees,

At last, the spring is around the corner. What a better time to get together to celebrate the one-year anniversary of our Infectious Diseases and Immunity in Global Health (IDIGH) program!

The objective of the Research Day is to gather our program members to foster exchanges and discussions across disciplines and groups. This Research Day will bring together 279 participants - 149 attendees are from across the four pillars (CTB, CORE, Clinical and Campus-based) of the program: 71 trainees, 23 PIs and 55 research staff. In addition, there are 39 representatives from 25 biotech and pharmaceutical companies as well as vendors and service providers and 91 research staff and trainees from other RI-MUHC programs who will participate in the product show.

We are looking forward to 35 presentations (both oral and posters) from trainees of the four IDIGH pillars. The Research Day will provide an opportunity for our trainees to showcase their research findings and to receive feedback on their results. I have no doubt that it will also provide a platform to interact and exchange research ideas in infectious diseases, immunity and global health for this diverse set of attendees.

I am grateful for the participation of Dr. Noni MacDonald and Dr. Jörn Coers who graciously accepted the invitation by our trainee committee to act as keynote speakers. The presentation of their latest discoveries, their insights into new trends in infectious diseases and immunity research in global health, and their advice to our trainees will be greatly appreciated.

We thankfully acknowledge our sponsors and partners. Their generous financial support has contributed to the success of our Research Day. I strongly encourage all of you to visit tables and booths and to get informed about the latest in research support.

Finally, a big thanks to our trainee committee (headed by Constantina Boikos and Alessandra Ricciardi), who have worked tirelessly in putting this event together. I believe you agree with me that they assembled an interesting and exciting program which brings out the best in IDIGH!

Enjoy the Research Day!

Erwin Schurr,
IDIGH Program Leader

PROGRAM

Event	Time
Registration & Breakfast	8.00 AM – 8.55 AM
Opening Remarks – Dr. Don van Meyel (Director, Centre for Translational Biology, the RI-MUHC)	8.55 AM – 9.00 AM
Keynote Speaker 1 – Dr. Noni MacDonald (Dalhousie University)	9.00 AM – 10.00 AM
Session 1 -Student Presentations	10.00 AM – 11.00 AM
Light Refreshment & Sponsor Product Show	11.00 AM – 11.30 AM
Session 2 -Student Presentations	11.30 AM – 12.30 PM
Lunch Break, Poster Viewing (without presentations), Sponsor Product Show	12.30 PM – 2.00 PM
Door Prizes	2.00 PM – 2.15 PM
Session 3 -Student Presentations	2.15 PM – 3.15 PM
Keynote Speaker 2 – Dr. Jorn Coers (Duke University)	3.15 PM – 4.15 PM
Poster Presentations, Judging, Cocktails & Snacks	4.15 PM – 6.00 PM
Award Presentation and Closing Remarks – Dr. Erwin Schurr (Leader, IDIGH Program)	6.00 PM – 6.20 PM

KEYNOTE SPEAKERS

Dr. Noni MacDonald

Professor, Department of Pediatrics, Dalhousie University

noni.macdonald@dal.ca



Dr. Noni MacDonald is a Professor of Paediatrics at Dalhousie University with a clinical appointment in Paediatric Infectious Diseases at the IWK Health Centre in Halifax. She is a member of the Canadian Centre for Vaccinology, Halifax and is head of the Health Policy and Translation Group. She is the former Dean of Medicine at Dalhousie University. Prior to coming to Dalhousie in 1999, Dr. MacDonald worked for 18 years at the University of Ottawa, the Children's Hospital of Eastern Ontario (CHEO) and the Ottawa General as a professor, teacher, clinician and researcher in paediatrics and infectious diseases.

Her major research interests have included the microbiology of cystic fibrosis; stress management in medical faculty; sexually transmitted diseases in adolescents; and, vaccines for serious infectious diseases in children and youth. She has published over 190 papers, served on the editorial boards of several major publications, and is the founding Editor in Chief for Paediatrics and Child Health, one of the most read Canadian specialty journals.

She is active in many academic and professional organizations as well as federal government committees and task forces. She also is a consultant to the Department of Immunization, Vaccine and Biologicals of WHO since completion of her term on the World Health Organization's Global Advisory Committee on Vaccine Safety. Dr. MacDonald has long been recognized in Canada as an advocate for children and youth health and as a leader in paediatric infectious disease.

Dr. Jörn Coers

Assistant Professor, Department of Molecular Genetics and Microbiology, Duke University

jorn.coers@duke.edu

Jörn Coers received his M.Sc. degree in Biology from the University of Konstanz, Germany in 1999. While enrolled at the University of Konstanz, Dr. Coers conducted his M.Sc. thesis work in Craig Roy's laboratory at the State University of New York, Stony Brook and later at Yale University where he continued to work as a research assistant until the spring of 2000. Dr. Coers made several important findings during his two and a half year stint in the Roy lab including the discovery of a chaperone complex in the bacterial pathogen *Legionella pneumophila* that is essential for the injection of virulence factors into host cells.



For his doctoral training, Dr. Coers employed transgenic mouse models to study the role of cytokine signaling in hematopoiesis at the German Cancer Research Center and at the

University of Basel, Switzerland, in the laboratory of Radek Skoda. His work led to the discovery that aberrant expression of the thrombopoietin receptor protein can cause thrombocytosis due to a shift in the balance between thrombopoietin-induced proliferation of platelet precursor cells and removal of thrombopoietin by receptor mediated internalization in platelets.

For his postdoctoral training, he returned to the topic of host-pathogen interactions and applied his knowledge of mouse genetics to study infectious disease in the labs of Bill Dietrich and Michael Starnbach at Harvard Medical School. He identified members of a large family of Interferon-inducible GTPases as critical components in the innate immune response to the bacterial pathogen *Chlamydia trachomatis*, the cause of a common sexually transmitted disease resulting in sterility and the leading cause of preventable blindness globally.

In 2010, Dr. Coers began his independent laboratory as an Assistant Professor in the Department of Molecular Genetics and Microbiology at Duke University Medical Center. His laboratory is interested in the fundamental aspects of immune recognition of intracellular bacterial pathogens and the corresponding microbial counter-immune strategies. His lab uses applied genetic approaches in mice and mammalian cell lines to identify novel host genes required for innate immune responses and bacterial genetics to identify key bacterial genes involved in triggering or evading host immunity.

ABSTRACTS

Format	Time	Name	Abstract title
ORAL	Session 1 (10.00 AM – 11.00 AM)	Hilary Hendin	<i>Plant-made virus-like particles bearing influenza hemagglutinin elicit a rapid and robust innate immune response in vitro</i>
ORAL	Session 1 (10.00 AM – 11.00 AM)	Robyn Lee	<i>Progression to Tuberculosis Disease Increases with Multiple Exposures</i>
ORAL	Session 1 (10.00 AM – 11.00 AM)	Vinicius Fava	<i>A genome wide association study of pathological inflammatory responses in leprosy</i>
ORAL	Session 2 (11.30 AM – 12.30 PM)	Brendan Snarr	<i>The Mammalian Lectin Galectin-3 Specifically Recognizes the Aspergillus fumigatus Exopolysaccharide Galactosaminogalactan and Mediates Host Defence.</i>
ORAL	Session 2 (11.30 AM – 12.30 PM)	Andràs Lèràrt	<i>HIV patient engagement in the development of HIV specific health measures: Literature review and framework analysis</i>
ORAL	Session 2 (11.30 AM – 12.30 PM)	Mathieu Mancini	<i>An ENU-induced mutation in Rel confers susceptibility to herpes simplex encephalitis</i>
ORAL	Session 3 (2.15 PM – 3.15 PM)	Shane Baistrocchi	<i>Antifungal-loaded neutrophils as a drug delivery system targeting pulmonary Aspergillus fumigatus infections</i>
ORAL	Session 3 (2.15 PM – 3.15 PM)	Elise Vuille-Lessard	<i>Prevalence and Cofactors of Nonalcoholic Fatty Liver Disease diagnosed by Transient Elastography with Controlled Attenuation Parameter in HIV Mono-Infection</i>
ORAL	Session 3 (2.15 PM – 3.15 PM)	Jenn Marton	<i>Forward Genetic Approach in Mice Identifies Tnni3k As a Modulator of Cardiomyocyte Innate Immunity During Viral Myocarditis.</i>
POSTER	Poster session (4.15 PM – 5.45 PM)	Marie-Helene Lacombe	<i>Creating new research opportunities through advances in cell sorting and analytical flow cytometry</i>
POSTER	Poster session (4.15 PM – 5.45 PM)	Min Fu	<i>WELCOME TO RI-MUHC IMAGING FACILITY</i>
POSTER	Poster session (4.15 PM – 5.45 PM)	Breanna Hodgins	<i>Alternative Administration Routes of H1-VLP Vaccine for Better Protection & Immune Response in the Elderly</i>
POSTER	Poster session (4.15 PM – 5.45 PM)	Sophie Huddart	<i>Knowledge of tuberculosis among 6109 patients in a NGO-supported DOTS program in India</i>
POSTER	Poster session (4.15 PM – 5.45 PM)	Natalia De Franca Shimabukuro	<i>Hematopoietic Stem and Progenitor Cell Dysfunction in Treatment Naïve Rheumatoid Arthritis Patients</i>
POSTER	Poster session (4.15 PM – 5.45 PM)	Monica Elizabeth Dallmann Sauer	<i>Exome sequencing in a family with twins displaying early-onset leprosy</i>
POSTER	Poster session (4.15 PM – 5.45 PM)	Anastasia Cheng	<i>Reactive Oxygen-Mediated Reduction of Immunosuppressive Capacity in Aged Human Mesenchymal Stromal Cells</i>
POSTER	Poster session (4.15 PM – 5.45 PM)	Marzieh Ghiasi	<i>Tuberculosis among health care trainees in South India</i>
POSTER	Poster session (4.15 PM – 5.45 PM)	Caitlin Zacharias	<i>Role of Glycosyl Hydrolases in Fungal Biofilms</i>
POSTER	Poster session (4.15 PM – 5.45 PM)	Jeremy Manry	<i>Natural selection has shaped gene expression level control involved in Mycobacterium leprae infection</i>

POSTER	Poster session (4.15 PM – 5.45 PM)	Jean-Yves Dubé	<i>The Contribution of N-Glycolyl Muramyl Dipeptide to Cell-Mediated Immunity Elicited by Complete Freund's Adjuvant</i>
POSTER	Poster session (4.15 PM – 5.45 PM)	Marwan Ghanem	<i>Complementation of Mycobacterium tuberculosis-specific genes in M. kansasii to describe early stages of TB infection.</i>
POSTER	Poster session (4.15 PM – 5.45 PM)	Sofianne Gabrielli	<i>Increased drug-induced anaphylaxis visits and factors affecting reaction severity: a 3-year follow-up study in two Emergency Departments in Montreal</i>
POSTER	Poster session (4.15 PM – 5.45 PM)	Cristiano Moura	<i>Risk of hospitalization for serious infection in ankylosing spondylitis (AS) patients using nbDMARD or Anti-TNF</i>
POSTER	Poster session (4.15 PM – 5.45 PM)	Alizée Dery	<i>START: Susceptibility To food Allergies in a Registry of Twins</i>
POSTER	Poster session (4.15 PM – 5.45 PM)	Kristin Van Den Ham	<i>Protein Tyrosine Phosphatase Inhibition Enhances The Generation Of Protective Tr1 Cells And Attenuates The Brain Sequestration Of Pathogenic T Cells During Experimental Cerebral Malaria</i>
POSTER	Poster session (4.15 PM – 5.45 PM)	Alonso Lira Filho	<i>Identification of cellular and immunological mechanisms triggered by Leishmania-derived exosomes in Cutaneous Leishmaniasis</i>
POSTER	Poster session (4.15 PM – 5.45 PM)	Fazila Chouiali	<i>Histopathology Platform</i>
POSTER	Poster session (4.15 PM – 5.45 PM)	Cynthia Kanagaratham	<i>Phenotypes of Ascaris suum extract induced allergic asthma in non-human primates prevented by resiquimod (S28463) treatment</i>
POSTER	Poster session (4.15 PM – 5.45 PM)	Brendan Snarr	<i>Microbial Glycoside Hydrolases as Antibiofilm Agents with Cross-Kingdom Activity Against Bacteria and Fungi</i>
POSTER	Poster session (4.15 PM – 5.45 PM)	Emily MacLean	<i>Biomarkers for active tuberculosis and prediction of active disease: a scoping landscape review</i>
POSTER	Poster session (4.15 PM – 5.45 PM)	Fernando Alvarez	<i>The role of the alarmin IL-33 in the dynamics of regulatory T cell reprogramming in inflammatory conditions</i>
POSTER	Poster session (4.15 PM – 5.45 PM)	Andreza De Melo	<i>Leishmanicidal activity and immunomodulatory effects of the Cramoll 1,4 Lectin</i>
POSTER	Poster session (4.15 PM – 5.45 PM)	Anupam Adhikari	<i>SHP-1-Regulated Hepatocyte Inflammatory Response Is Critical During Septic Shock</i>
POSTER	Poster session (4.15 PM – 5.45 PM)	Gabriel André Leiva-Torres	<i>An N-Ethyl-N-Nitrosourea Induced mutation in the GNL1 GTPase causes an NK cells deficiency and a susceptibility to Cytomegalovirus</i>
POSTER	Poster session (4.15 PM – 5.45 PM)	Sanjoy Kumar Das	<i>The Drug Discovery Platform of the Center for Translational Biology (CTB) to Discover Promising New Therapeutics</i>

MAJOR SPONSORS/PARTNERS



GENERAL SPONSORS



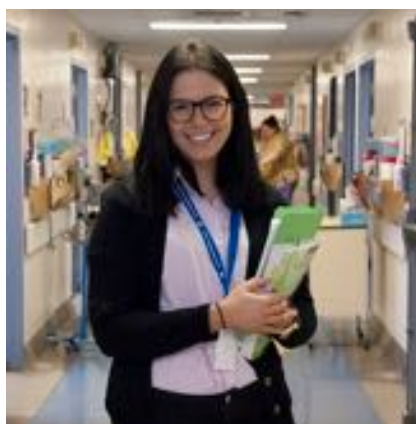
ACKNOWLEDGEMENTS



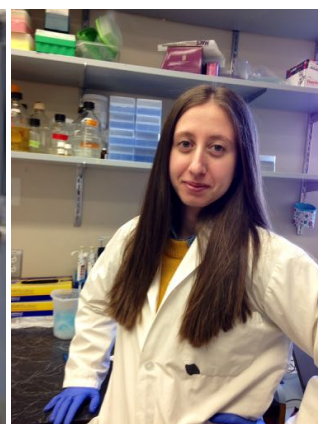
Dr. Jing Liu,
IDIGH Program Manager



Ms. Joanne Krief
IDIGH Program Assistant



Constantina (Tina) Boikos
President of the Research Day Committee



Alessandra Ricciardi
President of the Work in Progress Seminars



Supporting RI²GHT Committee Members:

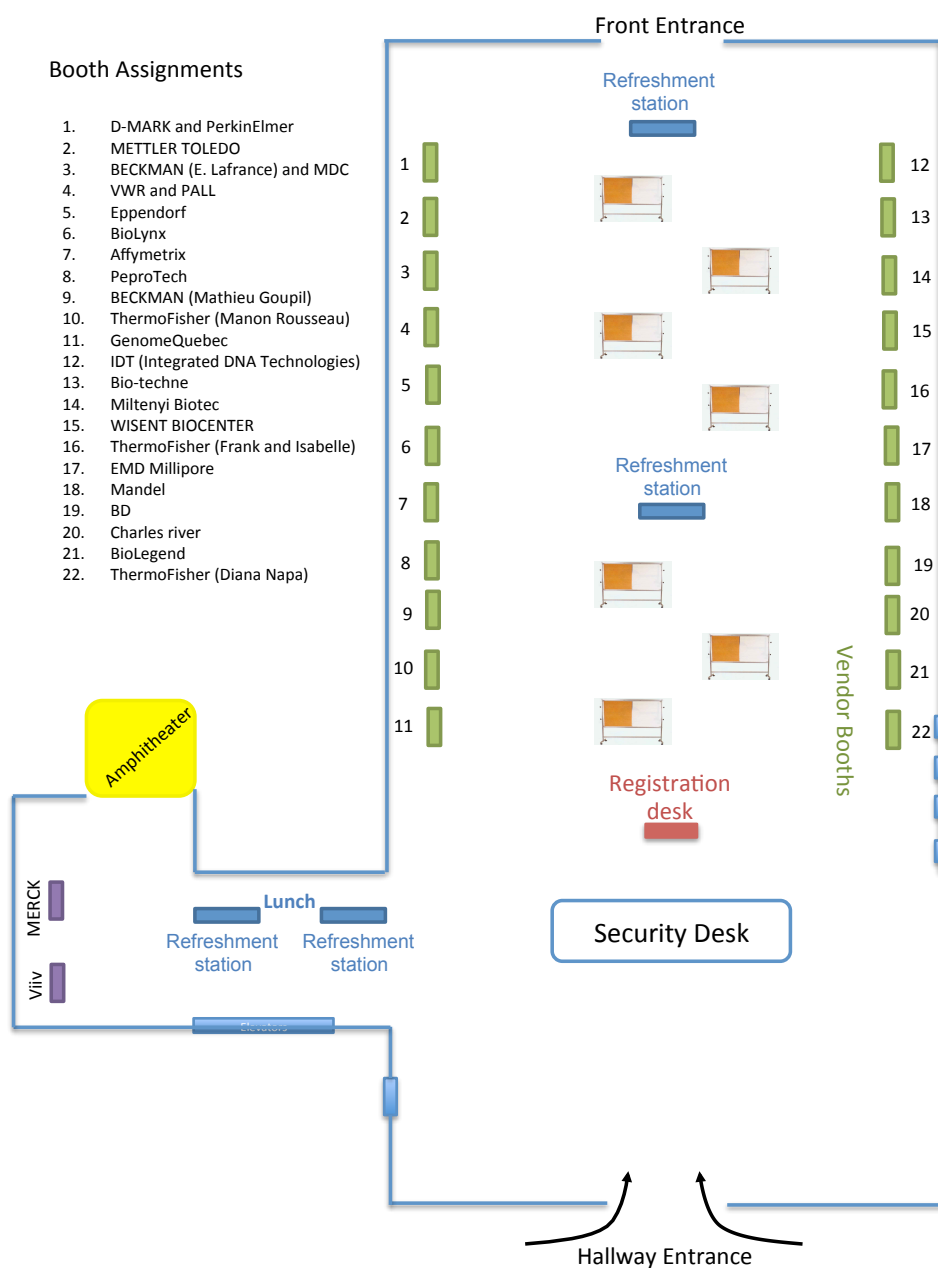
(Top, left to right) Vinicius Medeiros Fava, Rosalie Ponte, Vikram Mehraj, Alonso Lira Filho,

(Middle, left to right) Alessandra Ricciardi, Kristin Van Den Ham, Constantina Boikos

(Bottom, left to right) Breanna Hodgins, Hilary Hendin, Zahra Kiani,

(Missing from picture) Roman Istomine, Robyn Lee, Jeremy Manry

BOOTH/POSTER LAYOUT



LIST OF ATTENDEES

ADHIKARI ANUPAM

Post-doctoral Fellow
IDIGH Program

Ahmed Feysal

Ph.D. Student
IDIGH Program

Aibibula Wusiman

Ph.D. Student
IDIGH Program

Albert Danica

Research Assistant
IDIGH Program

Aldossary Haya

Ph.D. Student
IDIGH Program

Alexandres Nicoletta

Sponsor
Mandel Scientific Company Inc

Alsahafi Nirmin

Ph.D. Student
IDIGH Program

Alsdurf Hannah

Ph.D. Student
IDIGH Program

Alvarez Fernando

Ph.D. Student
IDIGH Program

Baistrocchi Shane

M.Sc. Student
IDIGH Program

Baron Christian

Sponsor
ViiV Healthcare Canada

Beaulé Martin

Sponsor
Pfizer Canada Inc.

Beaulieu Edith

Sponsor
PerkinElmer, Inc.

Behr Marcel

Principal Investigator
IDIGH Program

Belanger Edith

Sponsor
MilliporeSigma

Bell Emily

Manager, D-CAT
IDIGH Program

Bent Doug

Sponsor
MiltenyiBiotec

Bernard Nicole

Principal Investigator
IDIGH Program

Besso Dominique

Administrator/Sponsor
IDIGH Program

Bin Dhuban Khalid

Ph.D. Student
IDIGH Program

Boikos Tina

Ph.D. Student
IDIGH Program

Boudjemai Yacine

Sponsor
Merck

Bourbonnière Martin

Sponsor
Affymetrix

Brewer Angela

Research Associate
IDIGH Program

Burelle Chantal

Research Assistant
IDIGH Program

Caya Chelsea

Research Assistant
IDIGH Program

Chabot Josée

Lab Manager
IDIGH Program

Chao Yi-Sheng

Post-doctoral Fellow
IDIGH Program

Charland Jean-Francois

Sponsor
Mandel Scientific Company Inc

Cheng Anastasia

M.Sc. Student
IDIGH Program

Chouiali Fazila

Platform manager
IDIGH Program

Coers Jorn

Principal Investigator
IDIGH Program

Correa de Macedo Wilian

Ph.D. Student
IDIGH Program

Costiniuk Cecilia

Principal Investigator
IDIGH Program

Cyr Louis

Research Associate
IDIGH Program

Daher Jana

IDIGH Program

Dallmann Sauer Monica

Elizabeth
Ph.D. Student
IDIGH Program

Daoust Philippe

Sponsor
Genome Quebec

Das Sanjoy Kumar

Platform manager
IDIGH Program

de Castro Christina

Research Associate
IDIGH Program

De Franca Shimabukuro Natalia

IDIGH Program

De Melo Andrezza

Post-doctoral Fellow
IDIGH Program

Denis Marc-Andre

Sponsor
EPPENDORF CANADA LTD.

Dery Alizée

M.Sc. Student
IDIGH Program

Dery Capes Lynn

Program Manager
IDIGH Program

Di Battista Giovanni (John)

Principal Investigator
IDIGH Program

Dijkman Greg

Sponsor
D-Mark Biosciences

Diniz Atayde Vanessa

Research Associate
IDIGH Program

Dion Stéphane B.

Sponsor
Pfizer Vaccine Canada

Domenech Pilar

Research Associate
IDIGH Program

Dubé Jean-Yves

M.Sc. Student
IDIGH Program

Dumais JP

Sponsor
Molecular Devices / Beckman

Dunn Jonathan Luke

M.Sc. Student
IDIGH Program

Dupuy Franck

Research Associate
IDIGH Program

Engler Kim

Post-doctoral Fellow
IDIGH Program

FAVA VINICIUS

Post-doctoral Fellow
IDIGH Program

Forget Steve

Sponsor
Fisher Scientific

Francoeur Francois

Sponsor
Integrated DNA Technologies Inc.

Fu Min

Platform manager
IDIGH Program

Gabrielli Sofianne

M.Sc. Student
IDIGH Program

Gaudreault Véronique

Research Assistant
IDIGH Program

Gavino Christina

Research Assistant
IDIGH Program

Ghanem Marwan

M.Sc. Student
IDIGH Program

Ghiasi Marzieh

M.Sc. Student
IDIGH Program

Goupil Mathieu

Sponsor
Beckman Coulter

Graf Peter

Sponsor
Affymetrix

Guarneri Frank

Sponsor
Fisher Scientific

Hendin Hilary

Ph.D. Student
IDIGH Program

Ho Ming-Kai

Research Assistant
IDIGH Program

Hodgins Breanna

M.Sc. Student
IDIGH Program

Huddart Sophie

Ph.D. Student
IDIGH Program

ibrahim nisreen

Ph.D. Student
IDIGH Program

Ikonomovski Slagjana

Sponsor
bio-techné

Istomine Roman

M.Sc. Student
IDIGH Program

Johnson Lyne

Sponsor
Pall

Jusu Sylvester

Ph.D. Student
IDIGH Program

Kanagaratham Cynthia

Ph.D. Student
IDIGH Program

Kant Sanket

M.Sc. Student
IDIGH Program

KARATZAS COSTAS

Director, Business Development
IDIGH Program

Karkouti Dayane

Undergraduate student
IDIGH Program

Kaufmann Eva

Post-doctoral Fellow
IDIGH Program

Kiani Zahra

Ph.D. Student
IDIGH Program

Klein Marina

Principal Investigator
IDIGH Program

Klimova Natalia

Research Assistant
IDIGH Program

Kocilowicz Jennifer

Research Associate
IDIGH Program

Krief Joanne

Program Assistant
IDIGH Program

Lachapelle Benoit

Sponsor
BD Biosciences

Lacombe Marie-Helene

Platform manager
IDIGH Program

Lafleur Christine

Sponsor
METTLER TOLEDO / RAININ

Lafrance Emilie

Sponsor
Beckman Coulter

Lara Amanda

IDIGH Program

LEBOUCHE Bertrand

Clinician
IDIGH Program

Lee Robyn

Ph.D. Student
IDIGH Program

Lee Todd

Principal Investigator
IDIGH Program

lehoux melanie

Research Assistant
IDIGH Program

Leiva-Torres Gabriel André

Ph.D. Student
IDIGH Program

Lemoyne Isabelle

Sponsor
Thermo Scientific

Lènarè Andràs

M.Sc. Student
IDIGH Program

lennox lynda

Research Associate
IDIGH Program

Lessard David

Post-doctoral Fellow
IDIGH Program

Li Xinfang

Research Assistant
IDIGH Program

Li Lydia

Undergraduate student
IDIGH Program

Linker Xavier

Sponsor
Charles River Laboratories

Lira Filho Alonso

Ph.D. Student
IDIGH Program

Liu Jing

Program Manager
IDIGH Program

MABANGA TARA

Research Assistant
IDIGH Program

MacDonald Noni

Principal Investigator
IDIGH Program

MacLean Emily

Research Assistant
IDIGH Program

Mallette Nathalie

Sponsor
Merck Canada Inc.

Mancini Mathieu

Ph.D. Student
IDIGH Program

Manry Jeremy

Post-doctoral Fellow
IDIGH Program

Marcolefes Evan

Biotechnology Program

Martel Caroline

Research Assistant
IDIGH Program

martel nathalie

Research Assistant
IDIGH Program

Marton Jenn

Ph.D. Student
IDIGH Program

MASON HELEN

Research Assistant
IDIGH Program

Massicotte Angie

Research Assistant
IDIGH Program

McIntosh Fiona

Platform manager
IDIGH Program

McKenzie Marcia

Research Associate
IDIGH Program

Mehraj Vikram

Post-doctoral Fellow
IDIGH Program

Merckx Joanna

M.Sc. Student
IDIGH Program

Montamat-Sicotte Damien

Research Associate
IDIGH Program

Moura Cristiano

Post-doctoral Fellow
IDIGH Program

Napa Diana

Sponsor
Thermo Fisher Scientific

Nath-Chowdhury Milli

Research Assistant
IDIGH Program

Nguyen Sarah

Sponsor
EMD Millipore

Nguyen Christine

Sponsor
VWR

Ni Xiaoyan

IDIGH Program

O'Donnell Shauna

M.Sc. Student
IDIGH Program

Oakley Sheila

Manager, CORE
IDIGH Program

Olivier Martin

Principal Investigator
IDIGH Program

Orlova Marianna

Research Associate
IDIGH Program

Ostapska Hanna

Ph.D. Student
IDIGH Program

PANNUNZIO MARC

Sponsor
EPPENDORF CANADA LTD.

Papenburg Jesse

Principal Investigator
IDIGH Program

Paraskevacos George

International Probiotics Association

Patyka Mariia

Ph.D. Student
IDIGH Program

Pennell Leesa

Sponsor
BioLegend

Piccirillo Ciro

Principal Investigator
IDIGH Program

PONTE Rosalie

Post-doctoral Fellow
IDIGH Program

Puri Lekha

Research Assistant
IDIGH Program

Quach Caroline

Principal Investigator
IDIGH Program

Radzioch Danuta

Principal Investigator
IDIGH Program

Ralph Ben

Ph.D. Student
IDIGH Program

Rauch Joyce

Principal Investigator
IDIGH Program

Reed Michael

Principal Investigator
IDIGH Program

Restori Katherine

Post-doctoral Fellow
IDIGH Program

Ricciardi Alessandra

Ph.D. Student
IDIGH Program

Ripa Annie

Sponsor
PeproTech Inc.

Robidoux Frederick

Sponsor
Genome Quebec

Rousseau Manon

Sponsor
Thermo Fisher Scientific

Ruiz Lancheros Elizabeth

Research Associate
IDIGH Program

Saeed Sahar

Ph.D. Student
IDIGH Program

Salem David

Ph.D. Student
IDIGH Program

Schurr Erwin

Principal Investigator
IDIGH Program

Sebastiani Giada

Principal Investigator
IDIGH Program

Shao Steven

M.Sc. Student
IDIGH Program

shebiko seblework

M.Sc. Student
IDIGH Program

Sheppard Don

Principal Investigator
IDIGH Program

shourian mitra

Ph.D. Student
IDIGH Program

Smallwood Megan

Research Assistant
IDIGH Program

Snarr Brendan

Ph.D. Student
IDIGH Program

St-Jacques Bruno

Sponsor
Wisent

Stewart James

M.Sc. Student
IDIGH Program

Taubner Anne

Sponsor
Miltenyi Biotec

Toupin Isabelle

Post-doctoral Fellow
IDIGH Program

Tremblay-McLean Alexandra

M.Sc. Student
IDIGH Program

Tumilasci Vanessa

MediMabs

Vallieres Yves

Sponsor
Mandel Scientific Company Inc

Van Den Ham Kristin

Ph.D. Student
IDIGH Program

van Meyel Don

Principal Investigator
IDIGH Program

Vasquez Fabio

Research Assistant
IDIGH Program

Vidal Silvia

Principal Investigator
IDIGH Program

Villeneuve Tania

Sponsor
MJSBioLynx Inc.

Vinh Don

Principal Investigator
IDIGH Program

Vuda Madhusudanarao

Post-doctoral Fellow
IDIGH Program

Vuille-Lessard Elise

IDIGH Program

Wang Zhuoyu

Ph.D. Student
IDIGH Program

Ward Brian

Principal Investigator
IDIGH Program

Winter Kaitlin

M.Sc. Student
IDIGH Program

Winters Nicholas

Research Assistant
IDIGH Program

Xing Li

Research Associate
IDIGH Program

Xu Yong Zhong

Post-doctoral Fellow
IDIGH Program

Yam Karen

Research Associate
IDIGH Program

Yao Guanhan

M.Sc. Student
IDIGH Program

Young Katie

Ph.D. Student
IDIGH Program

Yurchenko Ekaterina

Research Assistant
IDIGH Program

Zacharias Caitlin

Ph.D. Student
IDIGH Program

Zelt Nicholas

M.Sc. Student
IDIGH Program

VENUE & HOW TO GET HERE

Research Day Location: E-S1 of block E (seen below in red), 1001 Boul Decarie, Glen Site, Montreal, Quebec H4A 3J1

How to get here:

- **Metro:** Vendôme station (Orange Line): a few minutes walking distance, also connected underground;
- **Bus:** 17, 37, 90, 102, 104, 105 and 124 stop at Vendôme station, and 78, 24 and 63 stop near the MUHC Glen site and 77 stops at the MUHC Glen site private road;
- **Commuter trains:** Vendôme metro station connects to: Saint-Jérôme, Candiac and Vaudreuil/Hudson;
- **Car:** easily accessible from highways 15, 20 and 720.
 - The public Glen parking lot entrance is on Décarie Blvd.
 - Parking: Entrance (seen below light blue arrow) cost: \$25 per day.
 - Elevator: press **S1**, and follow the signs to E block (seen below in red).

